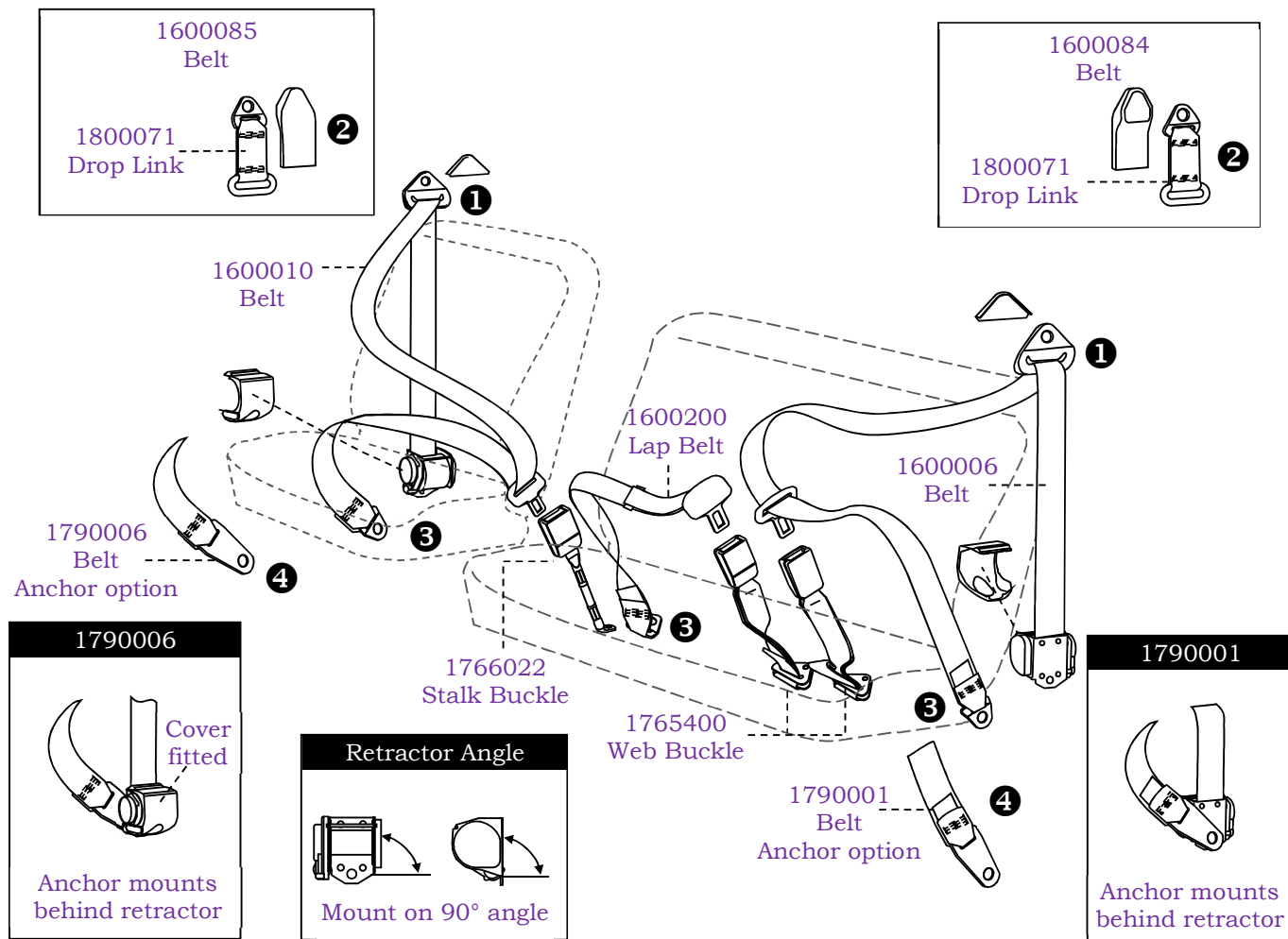


### 40 SERIES LANDCRUISER FRONT SEAT BELTS



Belt Part Number	Belt Type	Anchor Type	Anchor Angle	Sash Guide Type	Buckle Part Number	Buckle Length
1600006	Inertia Lap Sash	No.3 (Triangle)	23° Up	1	1765400	Adjustable 200mm-600mm
1600010	Inertia Lap Sash	No.3 (Triangle)	23° Up	1	1766022	RH Stalk 300mm
1600084*	Inertia Lap Sash	Option 3 or 4	-	2 (150mm)	1765400	Adjustable 200mm-600mm
1600085*	Inertia Lap Sash	Option 3 or 4	-	2 (150mm)	1766022	RH Stalk 300mm
1790001	Inertia Lap Sash	No. 4 (Long)	0° Flat	1	1765400	Adjustable 200mm-600mm
1790006	Inertia Lap Sash	No. 4 (Long)	0° Flat	1	1766022	RH Stalk 300mm
1600200	Static Lap	No.3 (Triangle)	23° Up	N/A	1765400	Adjustable 200mm-600mm

(\*) For applications where a Drop Link is present, use belt(s) 1600084 & 1600085 which use option 2 instead of option 1